

School Street Consultation Coleridge Primary School (SS46) School

HAVE YOUR SAY
ON THE SCHOOL
STREET

Crescent Road (east of Avenue Road)

We are proposing to introduce a School Street in this area and would like to hear your views.

What is a School Street?

School Streets transform roads to create a better environment for children to walk, cycle and wheel to school.

How does it work?

- Motor vehicles are not permitted to enter a School Street during operational hours (either side of school drop-off and pick-up times) unless they have been granted an exemption
- Access for residents and businesses will be maintained as they will be able to register vehicles for an exemption
- Blue badge holders can apply for an exemption
- Visitors, parents and delivery drivers will not be able to enter the School Street when it is in operation
- The School Street will be enforced by camera and vehicles without an exemption may be automatically issued a penalty charge notice



HAVE YOUR SAY
BEFORE 12 DECEMBER 2022



[www.haringey.gov.uk/
school-street-have-your-say](http://www.haringey.gov.uk/school-street-have-your-say)

Haven't received your consultation pack?

Email schoolstreets@haringey.gov.uk

or call 020 8489 4787

Haringey
LONDON

School Street Consultation Devonshire Hill Primary School (SS29)

Weir Hall Road (between Barclay Road
and Oak Avenue)

HAVE YOUR SAY
ON THE SCHOOL
STREET

We are proposing to introduce a School Street in this area and would like to hear your views.

What is a School Street?

School Streets transform roads to create a better environment for children to walk, cycle and wheel to school.

How does it work?

- Motor vehicles are not permitted to enter a School Street during operational hours (either side of school drop-off and pick-up times) unless they have been granted an exemption
- Access for residents and businesses will be maintained as they will be able to register vehicles for an exemption
- Blue badge holders can apply for an exemption
- Visitors, parents and delivery drivers will not be able to enter the School Street when it is in operation
- The School Street will be enforced by camera and vehicles without an exemption may be automatically issued a penalty charge notice



HAVE YOUR SAY
BEFORE 12 DECEMBER 2022



[www.haringey.gov.uk/
school-street-have-your-say](http://www.haringey.gov.uk/school-street-have-your-say)

Haven't received your consultation pack?

Email schoolstreets@haringey.gov.uk

or call 020 8489 4787

Haringey
LONDON

School Street Consultation Lancasterian Primary School and The Vale Primary School (SS12)

HAVE YOUR SAY
ON THE SCHOOL
STREET

Bruce Castle Road and Kings Road
(west of Birkbeck Road)

We are proposing to introduce a School Street in this area and would like to hear your views.

What is a School Street?

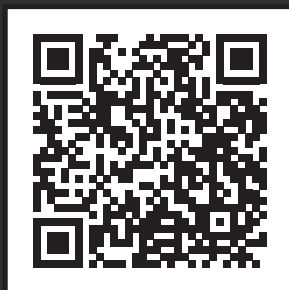
School Streets transform roads to create a better environment for children to walk, cycle and wheel to school.

How does it work?

- Motor vehicles are not permitted to enter a School Street during operational hours (either side of school drop-off and pick-up times) unless they have been granted an exemption
- Access for residents and businesses will be maintained as they will be able to register vehicles for an exemption
- Blue badge holders can apply for an exemption
- Visitors, parents and delivery drivers will not be able to enter the School Street when it is in operation
- The School Street will be enforced by camera and vehicles without an exemption may be automatically issued a penalty charge notice



HAVE YOUR SAY BEFORE 12 DECEMBER 2022



[www.haringey.gov.uk/
school-street-have-your-say](http://www.haringey.gov.uk/school-street-have-your-say)

Haven't received your consultation pack?

Email schoolstreets@haringey.gov.uk

or call 020 8489 4787

Haringey
LONDON

School Street Consultation Lea Valley Primary, Duke's Aldridge Academy and The Vale Secondary School (SS37)

HAVE YOUR SAY
ON THE SCHOOL
STREET

Trulock Road, Commonwealth Road, Almond Road,
Farningham Road, Somerford Grove

We are proposing to introduce a School Street in this area and would like to hear your views.

What is a School Street?

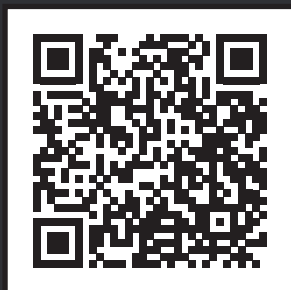
School Streets transform roads to create a better environment for children to walk, cycle and wheel to school.

How does it work?

- Motor vehicles are not permitted to enter a School Street during operational hours (either side of school drop-off and pick-up times) unless they have been granted an exemption
- Access for residents and businesses will be maintained as they will be able to register vehicles for an exemption
- Blue badge holders can apply for an exemption
- Visitors, parents and delivery drivers will not be able to enter the School Street when it is in operation
- The School Street will be enforced by camera and vehicles without an exemption may be automatically issued a penalty charge notice



HAVE YOUR SAY BEFORE 12 DECEMBER 2022



[www.haringey.gov.uk/
school-street-have-your-say](http://www.haringey.gov.uk/school-street-have-your-say)

Haven't received your consultation pack?

Email schoolstreets@haringey.gov.uk

or call 020 8489 4787

Haringey
LONDON

School Street Consultation

North Harringay Primary School (SS34 and SS35)

Falkland Road, Frobisher Road

HAVE YOUR SAY
ON THE SCHOOL
STREET

We are proposing to introduce a School Street in this area and would like to hear your views.

What is a School Street?

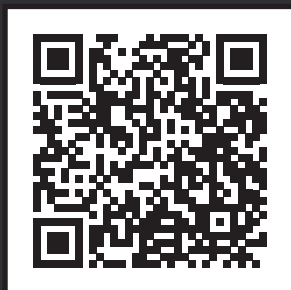
School Streets transform roads to create a better environment for children to walk, cycle and wheel to school.

How does it work?

- Motor vehicles are not permitted to enter a School Street during operational hours (either side of school drop-off and pick-up times) unless they have been granted an exemption
- Access for residents and businesses will be maintained as they will be able to register vehicles for an exemption
- Blue badge holders can apply for an exemption
- Visitors, parents and delivery drivers will not be able to enter the School Street when it is in operation
- The School Street will be enforced by camera and vehicles without an exemption may be automatically issued a penalty charge notice



HAVE YOUR SAY
BEFORE 12 DECEMBER 2022



[www.haringey.gov.uk/
school-street-have-your-say](http://www.haringey.gov.uk/school-street-have-your-say)

Haven't received your consultation pack?

Email schoolstreets@haringey.gov.uk

or call 020 8489 4787

Haringey
LONDON

School Street Consultation

South Harringay Primary School (SS40 and SS41)

Mattison Road, Pemberton Road

HAVE YOUR SAY
ON THE SCHOOL
STREET

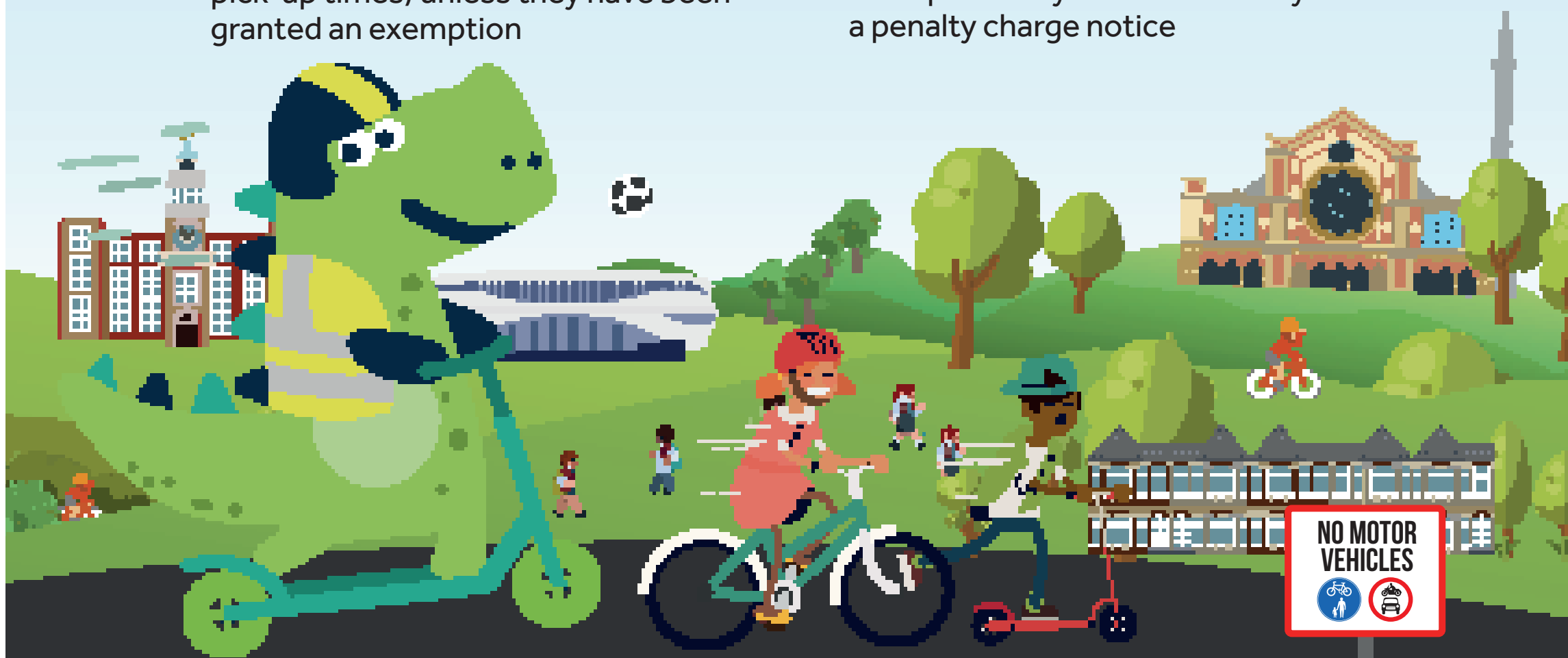
We are proposing to introduce a School Street in this area and would like to hear your views.

What is a School Street?

School Streets transform roads to create a better environment for children to walk, cycle and wheel to school.

How does it work?

- Motor vehicles are not permitted to enter a School Street during operational hours (either side of school drop-off and pick-up times) unless they have been granted an exemption
- Access for residents and businesses will be maintained as they will be able to register vehicles for an exemption
- Blue badge holders can apply for an exemption
- Visitors, parents and delivery drivers will not be able to enter the School Street when it is in operation
- The School Street will be enforced by camera and vehicles without an exemption may be automatically issued a penalty charge notice



HAVE YOUR SAY
BEFORE 12 DECEMBER 2022



[www.haringey.gov.uk/
school-street-have-your-say](http://www.haringey.gov.uk/school-street-have-your-say)

Haven't received your consultation pack?

Email schoolstreets@haringey.gov.uk

or call 020 8489 4787

Haringey
LONDON

School Street Consultation

St John Vianney Roman Catholic Primary School (SS45)

Stanley Road and Harringay Road
(north of Park Road)

HAVE YOUR SAY
ON THE SCHOOL
STREET

We are proposing to introduce a School Street in this area and would like to hear your views.

What is a School Street?

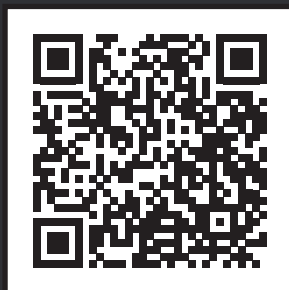
School Streets transform roads to create a better environment for children to walk, cycle and wheel to school.

How does it work?

- Motor vehicles are not permitted to enter a School Street during operational hours (either side of school drop-off and pick-up times) unless they have been granted an exemption
- Access for residents and businesses will be maintained as they will be able to register vehicles for an exemption
- Blue badge holders can apply for an exemption
- Visitors, parents and delivery drivers will not be able to enter the School Street when it is in operation
- The School Street will be enforced by camera and vehicles without an exemption may be automatically issued a penalty charge notice



HAVE YOUR SAY BEFORE 12 DECEMBER 2022



[www.haringey.gov.uk/
school-street-have-your-say](http://www.haringey.gov.uk/school-street-have-your-say)

Haven't received your consultation pack?

Email schoolstreets@haringey.gov.uk

or call 020 8489 4787

Haringey
LONDON

School Street Consultation

St Mary's CofE Primary School (SS43)

Rectory Gardens

We are proposing to introduce a School Street in this area and would like to hear your views.

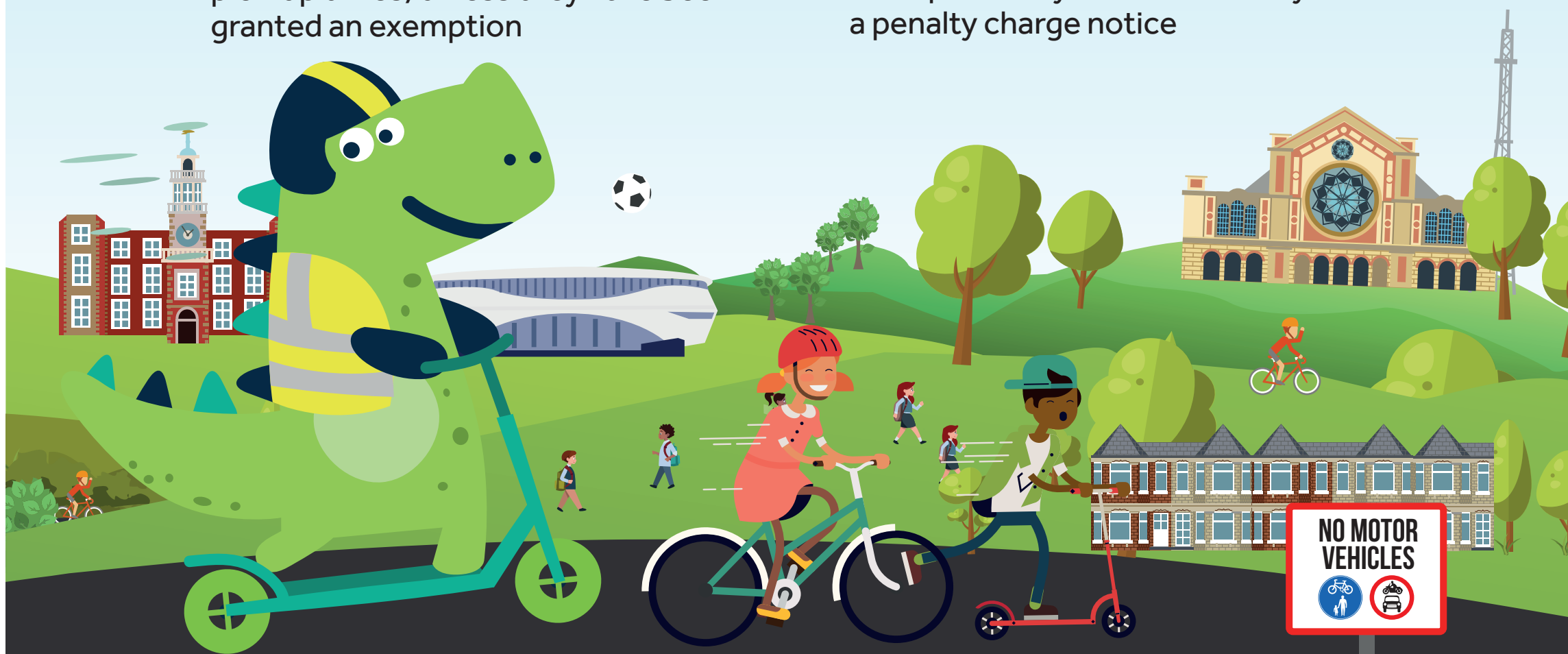
What is a School Street?

School Streets transform roads to create a better environment for children to walk, cycle and wheel to school.

How does it work?

- Motor vehicles are not permitted to enter a School Street during operational hours (either side of school drop-off and pick-up times) unless they have been granted an exemption
- Access for residents and businesses will be maintained as they will be able to register vehicles for an exemption
- Blue badge holders can apply for an exemption
- Visitors, parents and delivery drivers will not be able to enter the School Street when it is in operation
- The School Street will be enforced by camera and vehicles without an exemption may be automatically issued a penalty charge notice

HAVE YOUR SAY
ON THE SCHOOL
STREET



HAVE YOUR SAY
BEFORE 12 DECEMBER 2022



[www.haringey.gov.uk/
school-street-have-your-say](http://www.haringey.gov.uk/school-street-have-your-say)

Haven't received your consultation pack?

Email schoolstreets@haringey.gov.uk

or call 020 8489 4787

Haringey
LONDON

School Street Consultation

St Mary's Priory RC Infant and Junior School (SS42)

Hermitage Road (between St. Ann's Road and Templeton Road)

HAVE YOUR SAY
ON THE SCHOOL
STREET

We are proposing to introduce a School Street in this area and would like to hear your views.

What is a School Street?

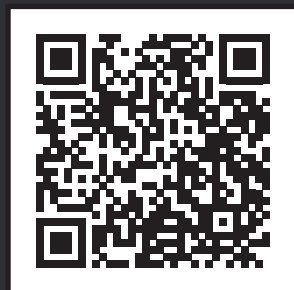
School Streets transform roads to create a better environment for children to walk, cycle and wheel to school.

How does it work?

- Motor vehicles are not permitted to enter a School Street during operational hours (either side of school drop-off and pick-up times) unless they have been granted an exemption
- Access for residents and businesses will be maintained as they will be able to register vehicles for an exemption
- Blue badge holders can apply for an exemption
- Visitors, parents and delivery drivers will not be able to enter the School Street when it is in operation
- The School Street will be enforced by camera and vehicles without an exemption may be automatically issued a penalty charge notice



HAVE YOUR SAY BEFORE 12 DECEMBER 2022



[www.haringey.gov.uk/
school-street-have-your-say](http://www.haringey.gov.uk/school-street-have-your-say)

Haven't received your consultation pack?

Email schoolstreets@haringey.gov.uk

or call 020 8489 4787

Haringey
LONDON

School Street Consultation

St Thomas More Catholic School (SS44)

HAVE YOUR SAY
ON THE SCHOOL
STREET

Glendale Road (south of Woodside Road)

We are proposing to introduce a School Street in this area and would like to hear your views.

What is a School Street?

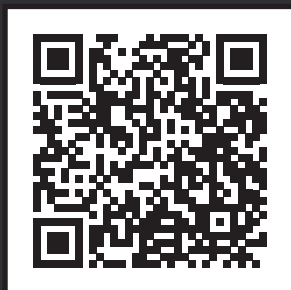
School Streets transform roads to create a better environment for children to walk, cycle and wheel to school.

How does it work?

- Motor vehicles are not permitted to enter a School Street during operational hours (either side of school drop-off and pick-up times) unless they have been granted an exemption
- Access for residents and businesses will be maintained as they will be able to register vehicles for an exemption
- Blue badge holders can apply for an exemption
- Visitors, parents and delivery drivers will not be able to enter the School Street when it is in operation
- The School Street will be enforced by camera and vehicles without an exemption may be automatically issued a penalty charge notice



HAVE YOUR SAY BEFORE 12 DECEMBER 2022



[www.haringey.gov.uk/
school-street-have-your-say](http://www.haringey.gov.uk/school-street-have-your-say)

Haven't received your consultation pack?

Email schoolstreets@haringey.gov.uk

or call 020 8489 4787

Haringey
LONDON

School Street Consultation

Stroud Green Primary School (SS39)

HAVE YOUR SAY
ON THE SCHOOL
STREET

Woodstock Road, Ennis Road, Perth Road, Florence Road, Oxford Road

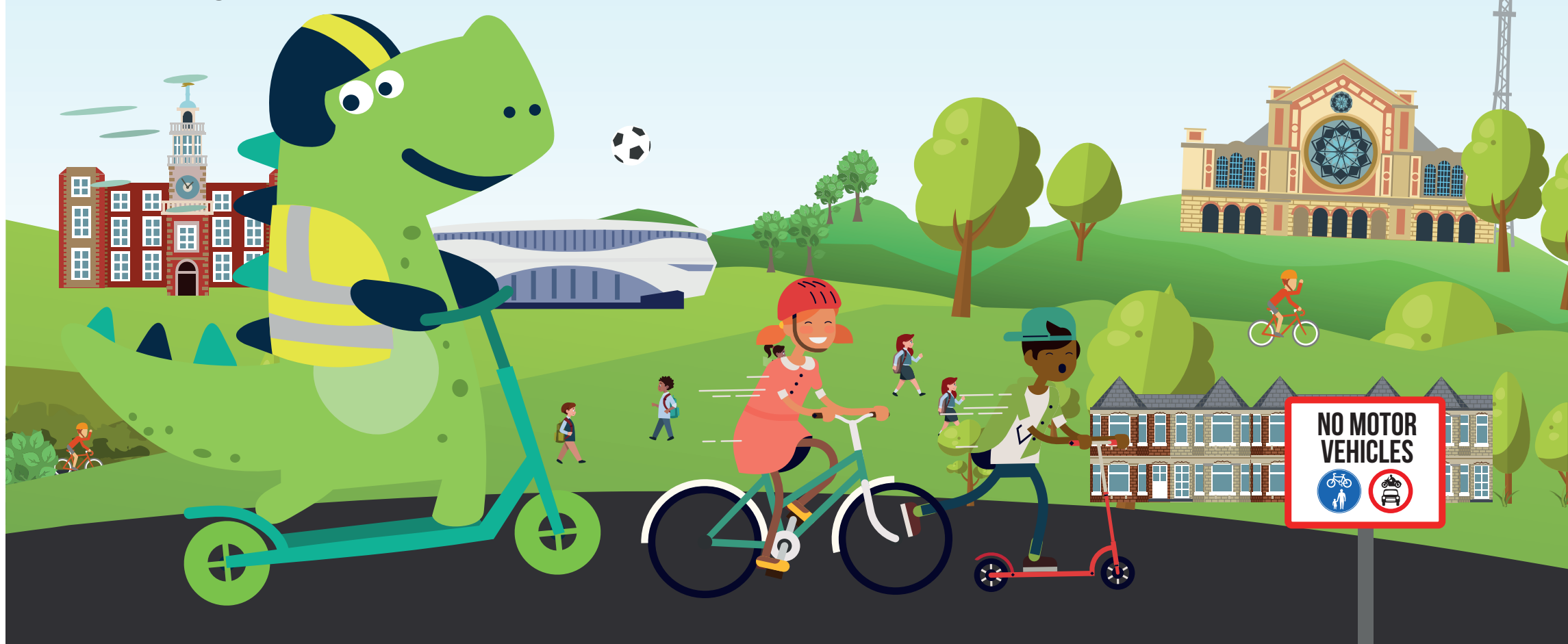
We are proposing to introduce a School Street in this area and would like to hear your views.

What is a School Street?

School Streets transform roads to create a better environment for children to walk, cycle and wheel to school.

How does it work?

- Motor vehicles are not permitted to enter a School Street during operational hours (either side of school drop-off and pick-up times) unless they have been granted an exemption
- Access for residents and businesses will be maintained as they will be able to register vehicles for an exemption
- Blue badge holders can apply for an exemption
- Visitors, parents and delivery drivers will not be able to enter the School Street when it is in operation
- The School Street will be enforced by camera and vehicles without an exemption may be automatically issued a penalty charge notice



HAVE YOUR SAY BEFORE 12 DECEMBER 2022



[www.haringey.gov.uk/
school-street-have-your-say](http://www.haringey.gov.uk/school-street-have-your-say)

Haven't received your consultation pack?

Email schoolstreets@haringey.gov.uk

or call 020 8489 4787

Haringey
LONDON